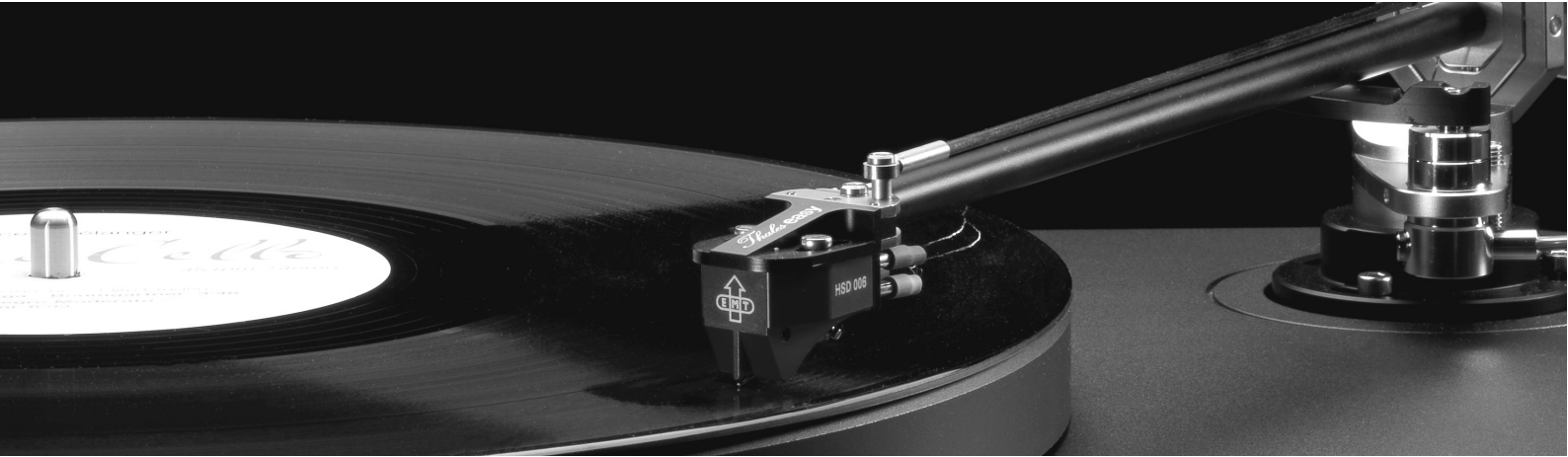


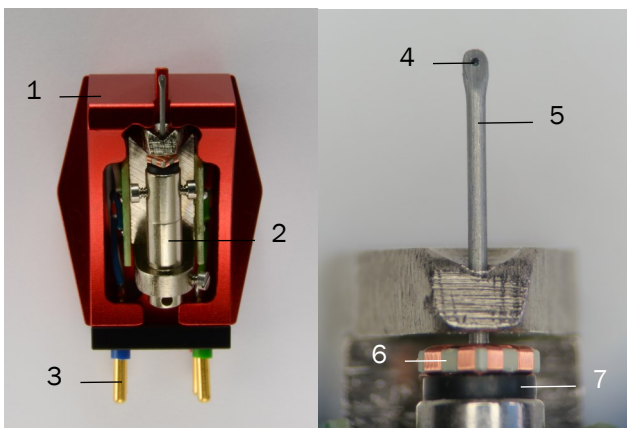
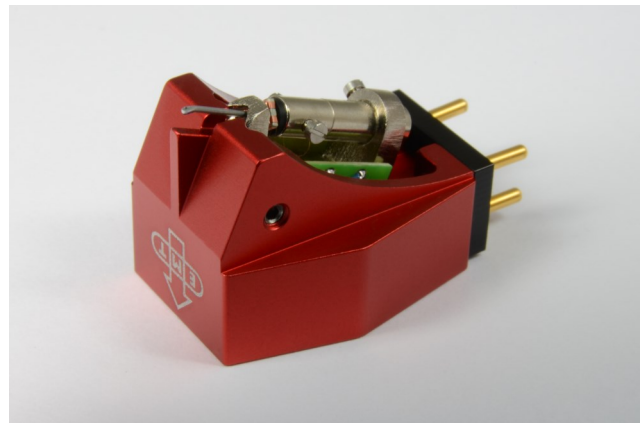
EMT Cartridges

HiFi Series



EMT started building cartridges in 1959 and launched the most famous TSD 15 in 1965. The HSD 006 (Stereo) and HMD 025 (Mono) cartridges feature the traditional EMT moving-coil generator, which has proven itself over decades in broadcast studios all over the world.

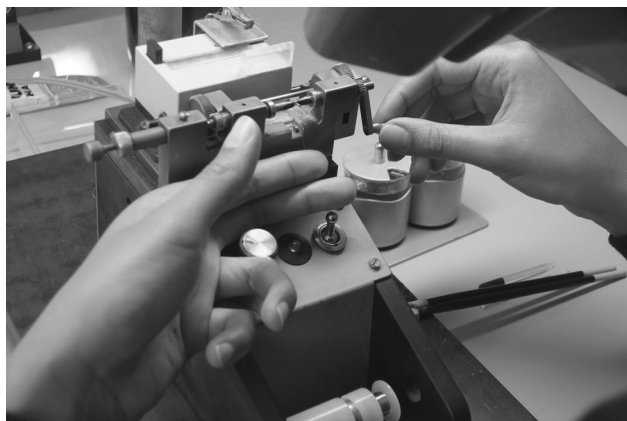
Modern body design makes it possible to bring professional EMT technology to your personal hi-fi system, and lets you enjoy the intoxicating musicality of this outstanding transducer.



- 1 Cartridge body, made of aluminium
- 2 Magnet, nickel coated
- 3 Pin-connection, golden coated
- 4 Diamond (SFL / SPH 25)
- 5 Aluminium cantilever
- 6 Transducer unit
- 7 Suspension and damping element



EMT was founded in 1940 and became famous by manufacturing professional turntables in Lahr, Germany. In 1965, EMT launched the famous MC cartridge TSD 15, which was produced in many ten-thousand pieces and used in broadcast studios all over the world.

In 1974, the portfolio was widened for hi-fi listeners and in 2006, the JSD series was introduced. Since 2014, all EMT cartridges are designed and manufactured in Switzerland.



We at EMT are enthusiastic about music reproduction and we feel sure that analogue technology harmonizes best with the nature of music.

All pickups are built piece by piece in fine craftsmanship by our well educated team of watchmakers and assembling employees. Even if we are familiar with most modern designing and manufacturing equipment, personal experience in listening and manual skills are the real reason making our cartridges so precious and musical.

		
Specification	HSD 006	HMD 025
Diamond:	Super-Fine-Line	Spherical 25µm
Transducer:	MC Stereo	MC Mono
Weight:	12g	
Tracking force:	2.4g	
Output voltage @ 5cm/s:	1.05mV	
Compliance:	12µm/mN	
Recommended load:	200 - 300Ω	